



ROTAACON
ROTATING CONSTRAINED SYSTEM

Evolving
The State of
Revision Knee
Arthroplasty

REVISION REDEFINED

The rotating hinge total knee implants are fully constraint knee implants that offer maximum stability to the knee joint. These are designed for the treatment of aseptic loosening, instability or severe bone loss and ligament loss around the knee.

*The rotating hinge knee implants have good survivorship ranging from 51% to 92.5% at 10 years post-operatively.

Rotacon is an implant designed to **Preserve Bone** during surgical procedures



*Source: Kouk S, Rathod PA, Maheshwari AV, Deshmukh AJ. Rotating hinge prosthesis for complex revision total knee arthroplasty: A review of the literature. J Clin Orthop Trauma. 2018 Jan-Mar;9(1):29-33. doi: 10.1016/j.jcot.2017.11.020. Epub 2017 Dec 5. PMID: 29628680; PMCID: PMC5884045.

ROTACON ROTATING CONSTRAINED SYSTEM

is one of the most comprehensive hinge revision knee system with the smallest box in the industry and can accommodate femoral augment in hinge knee.

The ROTACON rotating hinge knee system employs condylar loading, strategically placing the rotation center in close proximity to the hinge axis. This design eliminates stresses on the hinge pin, decreases stress at the cement/bone interface, and achieves a more natural kinematic motion.

Non weight bearing hinge gives the surgeon an impeccable choice to balance the knee with multiple sizes of insert and hinge shoulder extension giving stability to the joint in absence of collateral ligaments.

The versatility allows the system to accept femoral and tibial cones and sleeve for major bone defects.

An extensive selection of femoral and tibial components, complemented by stem extensions and augments, offers unparalleled versatility and personalized solutions on table for patients.

FEMORAL COMPONENT

The femoral component and articular surface of ROTACON Rotating Constrained System are designed to maintain optimum area of contact throughout the range of motion.

- Femur available in 6 sizes starting from 53mm.
- The smallest box in the rotating hinge knee category, reducing the bone loss significantly.
- The only femur in the rotating hinge knee category to accommodate femoral augments.
- Robust locking mechanism with extension rod to offer primary locking with taper locking technology and secondary locking by femoral locking screw.
- Central non weight bearing hinge with two different sizes of shoulder extension screw for optimal engagement with tibia.



TIBIAL COMPONENT

- Tibia available in 6 sizes, starting from 55mm in ML.
- Tibia is at 0° posterior slope with keel.
- Highly polished surface with securo lock technology to allow rotation up to 21° internal and external.
- Robust locking mechanism with extension rod (*primary locking with taper locking technology and secondary locking by tibial locking screw.*)





TIBIAL INSERT

- Inserts are in full congruency with femur giving high contact area, 700mm² in extension and 400mm² in flexion.
- Inserts are available in 7 sizes of thickness starting from 10mm up to 26mm.
- Deep anterior cut for patellar tendon relief in mid to high flexion.
- Inserts are made of UHMWPE from Orthoplastics UK.



OFFSET EXTENSION RODS

- Monolithic offset extension rods have inbuilt offset of 0mm, 2mm, 4mm and 6mm, reducing the chances of lock failure and anterior cortex fracture.
- Offset extension rods are grid blasted and fluted, making them suitable for both cemented and uncemented.
- Comprehensive size options available, starting from 8mm to 20mm in diameter and 40mm to 160mm in length.





AUGMENTS

- Augments are designed with 3D printing technology for maximum accuracy.
- Distal and Posterior augments are designed with interlocking technology.
- Tibial augments are cemented with anatomical contouring to fit best the tibial plateau.
- Distal femoral augments are designed in 5, 10 & 15mm and posterior femoral augments are designed in 5 & 10mm.
- Half and Full tibial augments are designed in 5, 10 & 15mm.



	Length of Shoulder Extension	Rotacon Insert
Size 1	53.3mm	10mm , 12mm, 14mm, 17mm
Size 2	65. 3mm	20mm, 23mm, 26mm



Experience unparalleled versatility with our Rotacon Implant, featuring 2 sizes of shoulder extension. Our exclusive offering ensures a remarkable jump height range, for size 1 shoulder extension starting at a minimum of 33 mm with the 17mm Rotacon Insert and reaching an impressive 43mm with the 10mm Rotacon Insert.

Size 2 shoulder extension starting at a minimum of 36mm jump height with the 26mm Rotacon Insert and reaching an impressive 45mm with the 17mm Rotacon Insert. With two sizes of hinge shoulder extension pin, product ensures minimum 33mm of jump height with any given insert.

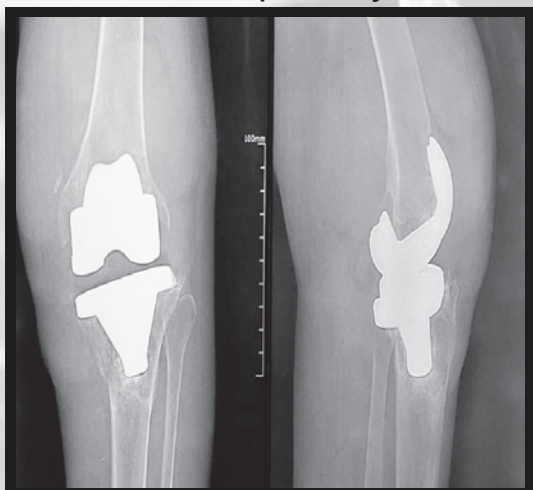
COMPATIBILITY CHART

TIBIAL COMPONENT

FEMORAL COMPONENT	Size 1	Size 2	Size 3	Size 4	Size 5	Size 6
B	B	B	B			
C		C	C	C		
D			D	D	D	
E			E	E	E	
F			F	F	F	
G				G	G	G

**Pre and Post- Op X-ray images illustrating
successful clinical outcomes**

Pre- Op X-Ray



Post Op X-Ray



