



GENUIN

TOTAL KNEE SYSTEM

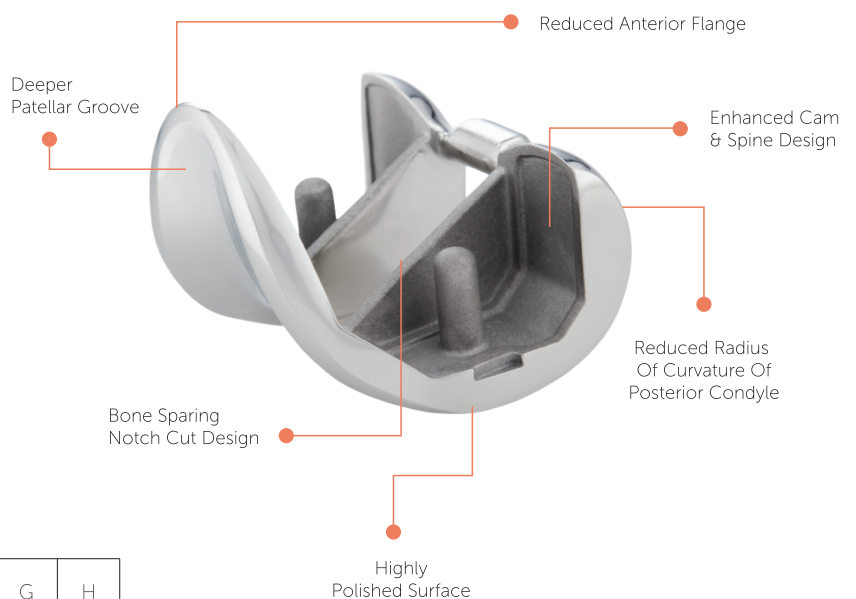


CE 2195

Femoral Component

Material: Co-Cr-Mo alloy

- Reduced anterior flange
- Deeper patellar groove
- Enhanced cam & spine design
- Reduced radius of curvature of posterior condyle for increased flexion
- Bone sparing notch cut design
- Highly polished surface
- Femur with pegs (optional)
- Available in 8 sizes



Sizes	A	B	C	D	E	F	G	H
ML (mm)	53.7	56.7	59	61.5	64.2	67	70	75
AP (mm)	49.8	52.5	54.4	58.1	59.5	63.3	66.5	70.5

Tibial Tray

Material: Co-Cr-Mo alloy

- Dove tail locking mechanism
- Continuous peripheral rim
- Highly polished tibial tray to reduce backside wear rate
- Cement pockets for optimum fixation
- Available in 7 sizes



Sizes	ML (mm)	AP (mm)
Tray 1	54.7	38
Tray 2	60	40
Tray 3	63	43
Tray 4	66	45
Tray 5	71	47
Tray 6	75	51
Tray 7	81	55



Tibial Insert

Material: UHMWPE

- Deep dish design
- Proportionate bearing surfaces for large contact area
- Enhanced post & cam/spine design
- Deeper anterior cut-out for enhanced patellar tracking



Insert Thickness (mm)
7
8
9
10
11
13
15
17

Patella

Material: UHMWPE

- Dome shaped
- 3 pegs for optimum fixation
- Available in 6 sizes



	Size 1	Size 2	Size 3	Size 4	Size 5	Size 6
∅	26	29	32	35	38	41
Thickness (mm)	8	8	8	8.5	9	11.5

Tibial Extension Rod

Material: Co-Cr-Mo alloy

- Hex stem design
- Rounded distal end



Dia	Length		
	50	100	150
10	✓	✓	✓
12.5	✓	✓	✓
15	✓	✓	✓

Components Compatibility Chart

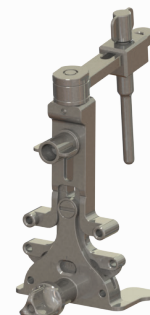
TIBIAL TRAY SIZES		TRAY SIZE 1	TRAY SIZE 2	TRAY SIZE 3	TRAY SIZE 4	TRAY SIZE 5	TRAY SIZE 6	TRAY SIZE 7
FEMUR SIZES	A	A 12		A 34				
	B	BCDE 12		BCDE 34		BCDE 56		
	C							
	D							
	E				DE 7			
	F					FGH 56		
	G							
	H							FGH 7

Tibial Insert Sizes



Femoral Sizer

- Universal instrument for anterior and posterior referencing
- Easy whiteside line tracking through the slot provided on the slider
- Epicondylar axis tracking possible
- Better angular control as linear motion converted to angular motion



Femoral Sizer